



The Community Breeze

2025

*Serving the North Lake Communities of Christmas Valley, Fort Rock, Silver Lake,
Summer Lake & Paisley & Southern Deschutes County*

Published by Precision Mail Services

Visit us on-line thecommunitybreeze.com

terryonitswayhome@gmail.com



Beautiful vibrant wildflowers in a grassy field, a few miles north of Lakeview.



Marie Lee

FREMONT POINT

Page 2

FOURTH of JULY HAPPENINGS



Page 3



Music ~ Games ~ Food ~ Fireworks

Pages 8-9



By Gary Brain

Bee-cuzz You Asked

MAY

and The Bees



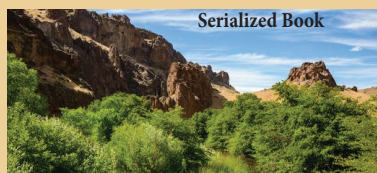
Page 6



Ida Dutcher

Our Homestead In the Canyon

Page 13



Serialized Book



Opinion
By The
Prospector

Yankee Doodle War Songs



Page 10

"Cognition"; What is it? What does it have to do with me?

Page 14

Summer: A busy time of year!

Happy Summer to All! At last the warm weather has arrived and the whole world, at least our world is turning every shade of green - from emerald to pale Sea-foam. Flowers are abundant, especially the wild ones.

June sees students in Lake County and beyond commencing one step in their education as they graduate on to new adventures. Many of us have several of these events to attend in the next few weeks.

June is also a time when farming takes off into high gear, a time when folks are slipping away to get in a little recreating, be it a quick outing to catch some fish, or going to a hike a new trails; or just explore the amazing and scenic state we live in.

Father's Day is June 15th. It is a time to remember the importance of fatherhood - to celebrate fathers and their important role in family dynamics and child rearing. It is a time for the family to gather together and enjoy their fathers by creating a day where all the energy is directed toward them.

The full Moon of June AKA the Strawberry Moon (because this is when the wild strawberries ripen) is on June 11th. It will create an illusion of a large orange or golden moon due to it being so close to the horizon. The 2025 Moon will be the lowest full moon in 18 years. June's moon is also called the honeymoon.

Flag day is June 14th so hopefully we will have the flags out for the week as they are generally set out and recovered on Tuesdays, thanks to the help of community service. However the Memorial Day flags were taken care of by Shara Shumway and a group of local volunteers.

Finally, the Summer Solstice falls on June 20 and is the official beginning of summer.

So: Happy graduation, father's day, flag day, summer solstice and summer. Oh Ya: now is the time to start planning for Christmas Valley's always fabulous Fourth of July celebration.

*Come find that perfect
gift for Dad
& Graduation is
just around the corner*

The Willows

Antiques & Vintage & Gifts

Laura Parks, owner

541-576-2199

87531 Christmas Valley Hwy
Christmas Valley, OR 97641

Knitting, Kitchen, & More

**10 am to 5 pm,
every Tues thru Sat**

PRSR STD
ECRWS
US Postage
PAID
EDDM RETAIL

Postal Customer

ECRWS

Fremont Point

By Marie Lee



Marie Lee

Lee Juillerat, friend and writer from Klamath Falls, is downsizing. For many years he was regional reporter for Klamath Falls' *Herald and News* covering Lake County. A couple of weeks ago he brought over some of his books, Lake County research files, and copies of newspaper articles for Lake

County Museum. Among them I found an article published August 4, 2002 in the *Herald and News*. In truth, he wrote what I would term as an obituary to Fremont-Winema National Forest's original cabin at Fremont Point.



By August of 2002 the Winter Fire and Toolbox Fire had combined into one gigantic mass of wildfire. Yours truly worked in the Budget and Finance section of Fremont-Winema National where I processed payments to contractors on fire assignments. Everyone was sad when we learned that the cabin at Fremont Point had burned.

Lee, who remains an adventuring person, had a special and personal relationship with the cabin calling it "an occasional home" for all seasons. "The day before the rehabilitated cabin officially opened for public use in 1994, my dog Rocky and I stayed at the cabin.

"By night I sat outside, enjoying the sparkle of stars. A shooting star flared across the night sky. Gentle winds blew like lullabies through the canopy of trees, gently caressing the branches of spiring Ponderosa pines and Shasta red fir.

"The next morning began with the sun rising like a crimson ball, its light gradually diffusing varying hues of salmon, magenta and orange as it stepped over Abert Rim ... Those colors were mirrored in the watery remnants of drought parched Summer Lake. The lake and the alkali flats shifted from pale brown to blue gray and, as the sun climbed more steeply, a chalky, pale white."

Lee went on to quote words written by John C. Fremont, who spent a night at that very location in December of 1843.

"Rising rapidly ahead to this spot we found ourselves on the verge of a vertical and rocky wall of the mountain. At our feet—more than a thousand feet below—we looked into a grass prairie country, in which a beautiful lake, some 20 miles in length, was spread along the foot of this mountain ... Shivering on snow three feet deep, and stiffening in a cold north wind, we exclaimed at once that the names of Summer Lake and Winter Ridge should be applied to these proximate places of such sudden and violent contrast."

Fremont Point cabin was built during the 1930s for use by those maintaining watch in the nearby 90-foot-tall fire lookout tower. Closed early in the 1980s the refurbished cabin opened as a public rental in 1994. Lee continued his story about a January 1995 trip to Fremont Point cabin. How he, with a group of

friends, undertook a cross-country ski trip of more than eight miles to spend two nights at the cabin.

Wildfire has ravaged much of our beautiful Lake County forested country from Bly, in Klamath County, to Paisley, to Silver Lake. Last summer a group of us "older ladies" drove up to Campbell and Deadhorse Lakes. We had a plan to spread a picnic lunch on a tree-shaded table near a place where lake water quietly laps against the shoreline of Campbell Lake. We each had a memory of such perfect summer picnics at Campbell and Deadhorse in days that seemed not that long ago.

Although they are high-mountain lakes, on that day last summer they appeared as desert lakes in a burnt-out science-fiction landscape.

Loving every inch of Lake County's landscape from our vast desert lands to our serene valley meadows to fragrant pine, juniper, and fir forests as I do, I was grief stricken and shocked as I gazed over the loss of landscape that will not return to its former beauty within a lifetime.

Lee's photos appearing with his 2002 article are statements of contrast with his winter scene at Fremont Point cabin as stunning as his summer photo.



*Come Celebrate! July 4th, 2025
Fabulous Family Fun*

CV Pyrotechs
10 PM

*Fantastic Fireworks
Light up the Sky*



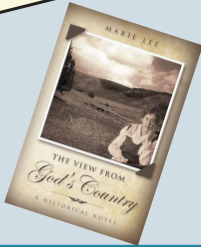
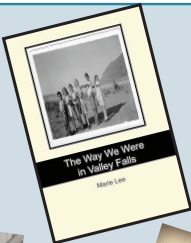
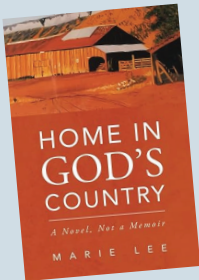
The Parade!



July 4th Parade~ 11am~ Down the highway,
Through the middle of town

*Floats - Classic Cars - Fire Engines - Ambulances -
Horses - Old-time equipment - ATVs and
more!*

*BOOKS BY
Marie Lee*



Call the Local Guys FIRST!

**Handde Pump
& Electric, Inc.**



Zimmatic Sales and Service

- Huge selection of Plumbing & Electrical Supplies
- Sinks, faucets, water heaters, pressure tanks
- Galvanized, ABS, CPVC fittings and tools



- Lumber including plywood
- Fencing Supplies
- Landscaping pavers, & more

Monday-Friday
8 am - 5 pm
Phone: 541-576-2206
Fax: 541-576-2702
CCB #45220



Located on the Highway in the Heart of Christmas Valley



*Jeff Hale
Health & Life Insurance Specialist*

MAKING MEDICARE SIMPLE
Working with you every step of the way



Let me take the
confusion out of
TURNING 65

Medicare supplements
Medicare Advantage plans
Part D Coverage

JHaleIns@gmail. com

541. 301. 7740

VISION
IT'S OUR FOCUS

Optometric Physician Timothy Arbow, O.D.
Will See You at NL Clinic by Appointment

541-554-9888

You Don't Have to Travel Out of Town
To Get Your Eyes Examined!

ANN'S STYLING SALON

NEW HOURS 541-410-6658

**Cuts, Styling, Color,
Weaves, Perms & More**

**MANICURES & NAILS
PEDICURES TOO!**

Brow & Facial Waxing

60342 Fossil Lake Road

Open: WEDNESDAY & FRIDAY

**PICKLEBALL at the
COMMUNITY HALL &
NOW AT NORTH LAKE SCHOOL**

THE FULL-SIZED COURT HAS BEEN PAINTED IN THE COMMUNITY HALL AND THE NEW NET IS ASSEMBLED AND UP!

CURRENTLY WE ARE PLAYING AT THE COMMUNITY HALL ON WEDNESDAYS AND THURSDAYS AT 11AM & AT NORTH LAKE SCHOOL IN THE SMALL GYM ON SUNDAYS AT 11AM

**BENEFITS OF PLAYING:
GETTING SOME EXERCISE - MEET NEW PEOPLE
HAVING A GOOD TIME**

SPONSORED BY THE CHRISTMAS VALLEY/NORTH LAKE CHAMBER WITH THE SUPPORT OF THE CHRISTMAS VALLEY PARK AND RECREATION DISTRICT

Fort Rock Livestock would like to thank North Lake for supporting our Mother’s Day fundraiser. Our flower fundraiser was a great success, and we cannot thank our wonderful community enough!



L-R: Seth Duffner, Gage Forman, Tanner Leehman, Kane Fivecoat, Wyatt Greiner, Evelyn Fivecoat, Kimber Fivecoat, and Skyler Hays-Mace



L-R: Back row - Cayden Mace, Kaitlyn Petteway, Gavin Forman, Maya Merritt-Fivecoat, Zoey Baker, Makayla Quinn and Kaiya Petteway. L-R: Front row- Paisley Quinn, Carter Lucas, Kimber Fivecoat, Evelyn Fivecoat, Ava Sherer, Madeline Mace, and Aubrey Church.
Not pictured: Raelea Leehman and Serena Lucas.



The Community Breeze

Is published monthly and mailed to all deliverable addresses in Oregon’s northern Lake County’s communities. The Publisher is Precision Mail Services. Our mailing address is 85450 Christmas Valley Hwy., Silver Lake, Oregon 97638. Readers may also read the *Breeze* on line by going to thecommunitybreeze.com

Editor: Terry Crawford 541-480-0753 - terryonitswayhome@gmail.com
Deadline: The 20th the month

Editorial commentary is welcome and all letters to the editor that are clearly signed with the writer’s full legal signature and also include the writer’s phone number will be considered for publication.

The following criteria will be applied equally to all submissions in determining a letter’s appropriateness for publication: Letters may not include personal attacks, inappropriate language, libelous content, negativity which serves no other purpose than to harm or unverifiable facts. Letters are limited to 300-600 words. Letters may not promote businesses - to do so is considered advertising.

The Community Breeze neither supports or condemns any ideas, creeds, religions, customs, attitudes or beliefs and letters to the editor do not necessarily reflect the beliefs of its editor or its advertisers.

Please mail Letters to the Editor to *The Community Breeze* ATTN: Terry Crawford, 85450 Christmas Valley Highway, Silver Lake, OR 97638.

The Community Breeze

Deadline: The 20th the month

The Breeze Is published monthly and mailed to most of the deliverable addresses in Oregon’s northern Lake County’s communities. The Publisher is Precision Mail Services. Our mailing address is 85450 Christmas Valley Hwy., Silver Lake, Oregon 97638. Readers may also read the *Breeze* on line by going to thecommunitybreeze.com

Editor: Terry Crawford
541-480-0753 - terryonitswayhome@gmail.com

Letters to the Editor

Editorial commentary is welcome and all letters to the editor that are clearly signed with the writer’s full legal signature and also include the writer’s phone number will be considered for publication.

The following criteria will be applied equally to all submissions in determining a letter’s appropriateness for publication: Letters may not include personal attacks, inappropriate language, libelous content, negativity which serves no other purpose than to harm or unverifiable facts. Letters are limited to 300-600 words. Letters may not promote businesses - to do so is considered advertising.

The Community Breeze neither supports or condemns any ideas, creeds, religions, customs, attitudes or beliefs and letters to the editor do not necessarily reflect the beliefs of its editor or its advertisers.

Please mail Letters to the Editor to *The Community Breeze* ATTN: Terry Crawford, 85450 Christmas Valley Highway, Silver Lake, OR 97638.



Dear Friends of IN A LANDSCAPE,

Hunter Noack and the touring team are currently winding their way through California, where we’ve been sharing music among redwoods, gardens, and coastal cliffs. Watch our Instagram and Facebook pages for pics and stories!

Next up: a return to Oregon for seven more concerts in May and June, from southern Oregon’s Applegate Lake to the Alvord Desert in the east. Read on for info about each of these shows, or purchase tickets and explore the full tour at this link.

If you can’t join us this round, we’ll be back in Oregon in July, August, and September with plenty more opportunities to experience music in the wild. We’ll also be sharing details soon about upcoming concerts in Washington, Montana, Wyoming, and Idaho.

Wine Down Ranch
Prineville, Oregon ~ June 19



An intimate gathering on a family-owned ranch, surrounded by forests and dramatic rocky vistas. Hosted by Roy & Mary Beyer. Housing sponsored by Stahancyk House.

Alvord Desert
Princeton, Oregon ~ June 21



A high desert adventure near Steens Mountain, with the piano overlooking the hot springs and sweeping horizon. One of our most remote and unforgettable settings.

Hosted by Alvord Hot Springs.

Christmas Valley Concrete, Inc.

Dale Shumway

541 576 2218 or 541 420 2917

Ready-Mixed Concrete ~ Septic Systems & Repairs, Rock & Fill Material ~ Land Clearing ~ Ditches ~ Driveways

Over 20 years serving the Christmas Valley, fort rock, Paisley, Silver lake & Summer Lake areas

Licensed/Bonded/Insured CCB #99796 DEQ #38347



Currently, Paul's Schedule is Full!



Farrier and Barefoot trimming Services
Paul Bjarnson
Call or Text 541-214-5361

OregonCountry REALTY INC



SHARA SHUMWAY
Principal Real Estate Broker



Visit us @: www.oregoncountryrealty.com Office: 541-576-2772
P.O. Box 887 Christmas Valley, OR 97641 Fax: 541-576-2302
E-mail: oregoncountry2002@yahoo.com Cell: 541-480-6461



Bee-Cuzz You Asked

MAY and the Bees



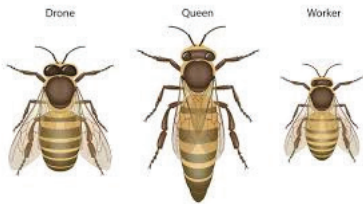
What a May it has been. Warm nice sun-filled days moderating to an normal (whatever that means...) May, Tis the season for swarms! I had two swarms leave my over wintered hives after I split them in April, only to land into a Juniper tree just out of our reach. With the help of our tractor bucket and me climbing up to pluck the swarm out of the tree and deposit it into their new home, we successfully re-homed them

Not so good for the bigger swarm. It was somewhat higher and almost over the irrigation canal. After making a “swarm catching bucket” attached to a 12’ pole, Marie and I set everything in place along with a 12x12’ tarp to catch the girls that might miss going into the bucket when the attempt to shake the swarm into said bucket was made. Just minutes before we started the attempt the actual capture of the swarm, they decided to move onto a different home that the scout

By Gary A. Brain Summer Lake Apiaries

bees decided was better than the current location. So goes catching swarms. Lesson learned, plan for the unexpected in beekeeping.

So onto May and what to expect and do. Remember to work your hives with slow deliberate motions, jerky movements will agitate the girls. Inspect to see if the Queen Mother is doing her job. Consider replacing her if she has spotty brood pattern or is giving you mostly drones. The girls may have already decided to replace her. If you see a queen cell in the upper or middle of the brood frame that comes straight out of a worker cell and takes a 90 degree turn down that is usually a sign the girls are not happy with the reigning Queen Mother and they are in the process of replacing her.



I have one hive that I am watching where the girls are building this kind of queen cell. It will be interesting to see what happens. I shall keep you all informed. Diligent use of your smoker will keep the girl from getting too riled up when you are inspecting the hives. Remember to work your hives from the side or back to stay out of their flight path.

When working your hive, inspect by removing an outside frame first. Consider adding supers to your hives. If you have supers with drawn comb from last year you can add more than one super at a time. If the girls need to draw new comb just add one super at a time. Put your second on after the first is almost filled. This will prevent the girls from only building comb in the centers of the supers.

Bees are hoarders so as they fill up the available space with honey give them more room to bring in the gold! Use your queen excluders to keep the Queen Mother from building brood in your supers. Do not remove any supers until they are capped, as the uncapped honey will ferment. Remember to keep the grass mowed in front of your hives.

Give the girls a clear runway to land! You can lay old carpet scraps or roofing to help keep the grass under control. Keep your record keeping up to date, as this will let you know what hives did well and what you found during your inspections. If you can, keep an extra brood box handy as you may need to capture a swarm. Swarms are an awesome sight to see, thousands of bees hanging on a limb or post. Capturing it is fairly simple if the swarm is not too high up in a tree!

Until next month Bee Safe!



For many years we have shared Beekeeping information with readers, and I think many of them are somewhat familiar with the process and terminology, but then I got to thinking, I really didn't understand what a 'super' was or an excluder for that matter. So this month I went searching for some information and visuals about these two important elements of a man-made hive.

The diagram below shows the layers of the hive. Its labels are not especially clear so here is what they are top to bottom: Outer Lid, Inner Lid, Honey Box, Queen Excluder, Brood Box, Brood Box and Base. A Super addition has several options but the easiest is to place above the Queen Excluder.

A Little Bit About Terminology

A honey **super** (short for superstructure) in beekeeping is an additional box placed on top of a beehive to provide extra space for storing honey. It's essentially an extension to the hive that allows bees to build and fill comb with honey, separate from the main brood chamber.

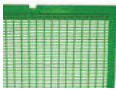
Honey supers are primarily used for honey storage, keeping it separate from the brood chambers where the queen lays eggs and the colony develops.

Supers are placed on top of the beehive, often above a **queen excluder**, which prevents the queen from entering and laying eggs in the super. They typically consist of a box with frames that the bees will use to build and fill with comb for honey storage.

Adding supers allows beekeepers to harvest honey from a hive while ensuring the bees have adequate space for their own brood and honey storage needs.

One of the main benefits is: Supers help prevent swarming (the bees feeling overcrowded and splitting into two colonies), provide more space for honey production, and can be removed before winter to provide a safe food supply for the bees.

A Queen Excluder is a barrier used in beehives to prevent the queen bee and drones from entering the honey supers,

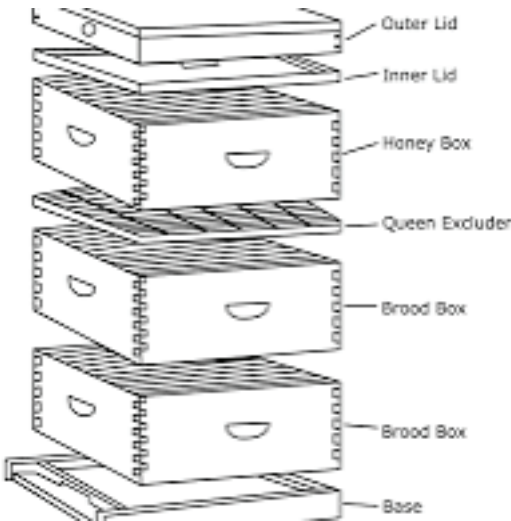


allowing worker bees to access them. This selective barrier ensures that brood is kept out of the honey supers, preventing honey from being contaminated with larvae or pupae.

Queen excluders are typically made of plastic or metal and have small holes that worker bees can pass through, but the larger queen and drones cannot.

By placing a queen excluder between the brood chambers (where the queen lays eggs) and honey supers, beekeepers can ensure that the honey stored in the supers is free of brood. Thus maintaining honey quality.

By preventing the queen from entering the honey supers, beekeepers can ensure that the combs in the supers are used for storing honey, not for brood rearing.



News and Recipies from the Flyway at The Lodge at Summer Lake

By Marie Brain

Well, we had to bid farewell to our Jason. When Jason’s Aunt Missy said she had a 14 year old nephew who might want to work with us, I thought , “Sure, well we’ll see...” But, though Jason was so shy he could not even look us in the eye when we met him, he matured into a dynamic, capable, fabulous waiter/front desk person who made himself indispensable to the Lodge in the five years he worked here. He cared for this place like it was his own, eagerly (mostly) working double shifts without complaining(usually), endearing himself to our customers and other staff alike. He has a way about him that draws people in to tell their stories and he happily shares his story and goals with them.

We look forward to hearing of his success in Pennsylvania as he spreads his wings! Any business will be blessed as we were to have him on the staff!

Now as a way of introducing our new Chef/Waiter team, Danny and Matt, we want to share a couple of their casual recipes with you. I didn’t give them much notice but asked, “ What do you have to put in the paper and I need it in a day?”!

Question answered, we offer the following:

DANNY’S \$25. BURGER

- Toasted Brioche Bun
- 24 oz Burger Patty (1875 Beef of course) cooked medium
- 2 cooked Chicken Strips (can cut, batter, and fry your own or purchase)
- 2 cooked strips of Bacon
- 1 Duck Egg, cooked just over medium, yolk still creamy
- Choice of fresh Salsa or chopped tomato & shredded lettuce
- 2 Onion Rings (again, do it yourself or purchase, or use canned onion rings in a pinch)



Prepare all toppings/ingredients then: Assemble your Burger and top with Burger Sauce made from 1/2 tsp each, or to taste --Hot Horseradish and Honey Mustard Dressing

BBQ Chips would be a good, light side for this Burger

Lake County Planning Commission Information

NOTICE IS HEREBY given that the Lake County Planning Commission will hold a public hearing Tuesday, June 17, 2025, at 6:00pm, by Zoom at <https://us06web.zoom.us/j/84185606888> or in-person at the Board of Commissioners Meeting Room of the County Courthouse at 513 Center Street, Lakeview, Oregon, to receive public comment and testimony on the following application. Failure to raise an issue at the hearing or to provide sufficient specificity precludes your ability to appeal the decision to the Board of Commissioners. If you have needs requiring special arrangements, please call 541-947-6036 at least 24 hours prior to the meeting.

CONDITIONAL USE PERMIT APPLICATION NO. 25-028-CUP Public Hearing concerning an application by Doug & Lisa Gunderson to establish a Non-Farm Dwelling on a 19.55-acre parcel, described as T25S R19E S- TL9100, approximately 2.52 mile east of the intersection of Fossil Lake Road and Lost Forest Lane to the southwest corner of the property; in an A-2 Agriculture Use Zone, with a Comprehensive Plan Designation of R – Range. A decision will be based on Articles 3 and 24 of the amended Lake County Zoning Ordinance of 1980.

CONDITIONAL USE PERMIT APPLICATION NO. 25-031-CUP Public Hearing concerning an application by Vanessa Larson to establish a Non-Farm Dwelling on a 20.00-acre parcel, described as T27S R17E S05 TL1100, approximately 0.50 mile west of the intersection of N Candy Rd and Hill Lane to the southwest corner of the property; in an A-2 Agriculture Use Zone, with a Comprehensive Plan Designation of A – Agriculture. A decision will be based on Articles 3 and 24 of the amended Lake County Zoning Ordinance of 1980.

CONDITIONAL USE PERMIT APPLICATION NO. 25-033-CUP Public Hearing concerning an application by Zameena Raheem to establish a Non-Farm Dwelling on a 38.55-acre parcel, described as T27S R18E S- TL1500, approximately 9.50 miles **See Page Ten** east

MATT’S OREO CREAM CHEESE PIE

- 1 ready to use Oreo crust, or crush up cookies, mix with Butter and press in 9” pie pan)
 - 1 Cup Heavy Whipping Cream
 - 8 Oz of Cream Cheese, room temperature and softened
 - 1/3 cup Sugar
 - 1/2 tsp Vanilla (real stuff for best flavor)
 - 1 1/2 cup chopped Oreos
 - Extra Oreos for garnish
- Beat Cream Cheese til fluffy, add Sugar and Vanilla and mix til thoroughly combined.
Whip the Heavy Cream till stiff peaks form, then fold into the Cream Cheese mixture.
Fold the chopped Oreos into the Cream and Cheese mixture til all is well blended.
Dump (his word) whole mixture into the Oreo Crust and refrigerate for 6 hours or overnight til firm.
Top with whole or crushed Oreo's



Some fresh Mint Leaves or Orange Zest would be a fine compliment to the topping as well.

Lake County Community Foundation

Contacts:
Cindi Nolan, candgcattle@hotmail.com
Leanne Miles (North Lake), milesleanne90@gmail.com
Melanie Lasley, Melanielasley2@gmail.com
Emma Shanahan (Paisley), ecshanahan89@gmail.com

May 23, 2025
For immediate release

Lake County Community Foundation is Accepting Grant Applications

Deadline: Monday, June 30, 2025, 5:00 pm

The Lake County Community Foundation invites grant applications that benefit Lake County for the purpose of enhancing cultural, community improvement, economic development, education, philanthropic, youth development, and related purposes within Lake County, Oregon. The Foundation expects to award grants to one or more eligible groups in Lake County in July 2025. The LCCF Board will award a total of \$12,500 for the 2025 grant cycle.

To complete an application, please go to the Lake County Community Foundation website, [Home - Home - Lake County Community Foundation](#) click Grant Application on the top of the page, [Grant Application](#), to fill out the application. We ask that you be precise in your answers while keeping your application to a minimum.

You may contact a board member for a fillable form. Email grant application to communityfoundationlakecounty@gmail.com, or submit through the website(above) by 5:00 pm, Monday, June 30, 2025.

If you have questions about the Lake County Community Foundation, please visit our webpage, lakecountycommunityfoundation.net, or email any board member through communityfoundationlakecounty@gmail.com. If you know a board member listed on the website, they are also able to answer questions.

Recipients will be notified after July 31, 2025, LCCF Board meeting.

CELEBRATIE on the 5th



Annual Independance Day
GOLF Tournament at
The Christmas Valley Golf Course

Sign-up at 8 am at the first tee
Play begins at 9 am

9 Hole - 4-Man best ball format
\$15 Members ~ \$30 Non Members

BBQ to Follow at the
Rhondo House

Burgers, Dogs, lots of Sides

Awards & Raffle Prizes



July 4th Parade Entry

sponsored by Park & Rec ~ managed by the Chamber

AUTOMOBILES \$ 10 each

CHILDREN\$ 1 per child

COMMERCIAL \$ 10

FARM \$ 10

GOV/EMERGENCY VEHICLE \$ 10 each

INDIVIDUAL \$ 5 each

NON-PROFIT \$ 10

HORSES/MULES \$5 per under saddle \$10 per Team

JUDGES CHOICE CATEGORIES: BEST COSTUME ~
FUNNIEST ~ CUTEST ~ MOST ORIGINAL ~ MOST
CREATIVE ~ MOST COLORFUL ~ BEST ANIMAL

Name_____

JULY
3,4,5
2025

LIVE MUSIC

RANCH HAND BAR & GRILL

Presents

SMELLS
LIKE
FREEDOM

Summer Concert Series 21+

SEEKING SATURN
DUSTIN SCIARAFFO
TYLER VINCENT MUSIC
DJ MYSTIC
SAGEBRUSH ROCK
TRENT BEAVER &
THE DAMAGE
MERCHANT MARKET-FOOD COURT-FESTIVITIES
COME AND JOIN US FOR THE WEEKEND!

Christmas Valley . OR

Dart & Poker Tournaments

FOR MORE INFO CALL (541)576-2014



Planned but not Set in Stone

Several local people have been working very hard, mostly behind the scenes, to bring in more activities, food trucks, and craft people. Sadly, even though there are many groups and individuals committed to the effort, guaranteeing venues has been problematic.

This is not to say that this isn't happening, but rather to let you know that at this writing we can't offer readers clear times or locations. So keep an eye on social media and watch for posters for updates on these activities.

Over the holiday weekend watch for sandwich boards directing you to the various activities such as Water Slides, Horseshoes, Pickle Ball, Music, Car Shows and much more.

PARADE

LINE-UP ON BAY RD -Starting at 10 am

Judging starts at 10:45 am

Parade begins moving at 11 am

Awards will be handed out as entrants pass

**Yard
Games!**

**Darts!
Free Pool!**

Come join us at
The Christmas Valley Lodge

For a weekend of Independence Day celebrations!



Schedule of Events

Friday July 4th:

**1st Annual Christmas Valley Lodge Car & Truck Show immediately
following parade**

4:00-6:00 Happy Hour & 4:00-Close Tri Tip Dinner Special

7:00-10:00 Bingo

10:00ish Firework Show on the lawn

Saturday July 5th:

4:00-6:00 Happy Hour

7:00 Karaoke

**Great Food!
Cold Drinks!**

**Lakefront view of
the fireworks
show!**

YANKEE DOODLE

"I'M A YANKEE DOODLE DANDY
YANKEE DOODLE DO OR DIE."

By The Prospector

War Song. The two words themselves are somewhat in conflict with each other. And yet, for the sake of world culture, this type of music is of stirring importance. Our own national anthem is a war song of sorts.

Anthropologists theorize that this was some of the first music sung. Primitive people probably conjured their cult rituals with the war song and maybe accompanied it with fiery dancing.

In ancient Greece, the songs of Tyrtacus were sung by Spartan warriors at their campfires. Still other songs were used to harden the spirits of those about to enter battle.

The words to many anthems of war are based on sound psychological principles. What could be more encouraging than the brave deeds of forefathers or a victory projected, predicted in music?

by the end of the fifteenth century, army units began to have trumpeters, drummers, and pipers attached to them. Their music supported the discipline of marching to encourage the urge to battle.

It was so in the American Revolution:

"Yankee Doodle keep it up,
Yankee Doodle dandy,
Mind the music and the step,
And with the girls be handy."

Some say this British tune in two/four time can be traced to a song of French vineyard workers. Others argue that it came from a Spanish sword dance of a German harvest song or a Dutch peasant song. We're not just sure but we know for a fact the British Army sang it during the French and Indian wars a full two decades before the signing of the Declaration of Independence. The British Army used it to shatter our colonist's confidence, even going so far as to sing it outside a church during services. It was meant to cause fear.

A patriot by the name of Francis Hopkinson stole this demoralizing melody and changed just the words. He wrote, Yankee doodle went to town Riding on a pony, Stuck a feather in his cap, And called it macaroni."

Perpetuating a long tradition of musical psychological warfare, the colonist's knew what hurt the most. So the enemy heard their own song, their own words, thrown right back in their faces. And it worked.

Yet another favorite song in every camp read: "There was Captain Washington, Upon a stepping stallion. A- giving orders to his men, I guess there was a million."

This song was heard in battle, in defeat, and in victory. It was even played at the final surrender of General Cornwallis.

This song was intended to needle American troops during our revolution until, with incomparable American mischief we turned the needle around and they got the point!

This song's success contributed (according to the founding fathers) to making Freedom of Speech the very most important Amendment, the First. If that Right of ours is infringed upon then we move to the Second Amendment.

"Yankee Doodle is a tune,
That comes in mighty handy,
The enemy all runs away.
At Yankee Doodle dandy!"



Lake County Planning Commission Information
From page 7

of Christmas Valley: 7 miles east on Christmas Valley Hwy, then north 2 miles, then east on Langdon Springs Ln a 0.5 mile to the northeast corner of the property; in an A-2 Agriculture Use Zone, with a Comprehensive Plan Designation of A – Agriculture. A decision will be based on Articles 3 and 24 of the amended Lake County Zoning Ordinance of 1980.

CONDITIONAL USE PERMIT APPLICATION NO. 25-034-CUP Public Hearing concerning an application by Jesus Andrade to establish a Non-Farm Dwelling on a 5.00-acre parcel, described as T27S R18E S28C TL800, approximately 6.50 mile east of Christmas Valley: 4 miles east on Christmas Valley Hwy, then south 2.5 miles on S Gloria Rd to the northwest corner of the property; in an A-2 Agriculture Use Zone, with a Comprehensive Plan Designation of R – Range. A decision will be based on Articles 3 and 24 of the amended Lake County Zoning Ordinance of 1980.

CONDITIONAL USE PERMIT APPLICATION NO. 25-035-CUP Public Hearing concerning an application by WR Systems, Ltd. to establish Radio Transmitter/Receiver Antennas on portion of a 712.70-acre parcel, described as T25S R14E S- TL400, approximately 6.00 miles NE of Fort Rock: 3 miles east on Fort Rock Rd, then north 3 miles on Webster Rd to the corner Soto Ln, the site being NE of said corner on property owned by Ken & Leslie Hufford; in an A-2 Agriculture Use Zone, with a Comprehensive Plan Designation of A – Agriculture. A decision will be based on Articles 3 and 24 of the amended Lake County Zoning Ordinance of 1980.

CONDITIONAL USE PERMIT APPLICATION NO. 25-036-CUP Public Hearing concerning an application by WR Systems, Ltd. to establish Radio Transmitter/Receiver Antennas on portion of a 320.0-acre parcel, described as T26S R17E S- TL4000, approximately 3.00 miles NW of Christmas Valley: 1 miles west on Christmas Valley Hwy, then north 2 miles on N Rainbow Rd to the SE corner of the property owned by David and Janette Roth; in an A-2 Agriculture Use Zone, with a Comprehensive Plan Designation of A – Agriculture. A decision will be based on Articles 3 and 24 of the amended Lake County Zoning Ordinance of 1980.

CONDITIONAL USE PERMIT APPLICATION NO. 25-037-CUP Public Hearing concerning an application by Brock Sutfin to establish Commercial Operation in Conjunction with Farm Use on portion of a 398.74-acre parcel, described as T41S R20E S- TL400, at 12355 Highway 395, with the auctions/sales on the westside of the highway; in an A-1 Exclusive Farm Use Zone, with a Comprehensive Plan Designation of A – Agriculture. A decision will be based on Articles 2 and 24 of the amended Lake County Zoning Ordinance of 1980.

Santa's General Store

541-576-2999

Come in and Check Out
our expanded Fishing and
Hunting Sections

Tools & Hardware

Propane & Accessories

Pet Food & Supplies

ATV permits & gear



87038 Christmas Valley Hwy.
info@santasupplyco. com

Comings and Goings

By Terry Crawford

With summer finally arriving, it's time to get out and do a bit of yard beautification. I finally broke down and bought a few annuals - I always say I'm not going to but then I just can't help myself. Now I have to find the time to get them planted.

I headed over to Eugene for a Working Equitation show the weekend of the 17th with my wonderful horse, Beach Boy. We showed in two shows - one on Saturday and the other on Sunday and were judged by two judges, with the scores being averaged. We were overall high-point in our division at show one and reserve high-point champion in our division at show two. It was a very fun weekend. And best of all, my son Stephen came down for two days, so we got to hang out and enjoy each other's company.

I attended the Christmas Valley Rural Fire Protection District board meeting which was held at the Community Hall as they expected quite a few people to attend due to some concerns. I think there were 17 in total. Well, not a single person was able to ask questions or verbally participate as this district's policy is to only accept Public Comment in written form. That information is on their posted agenda, and if they have a web or Facebook page it may be there also, I don't know. But what I did learn is that not one of the people in attendance was aware of the policy and that they generally get meeting times and other information from the two local publications rather than from notices on billboards or at the Post Office. So be aware if you want to participate and check with the district for their requirements.

DESERTVUE GROOMING

42 Years Experience

Reasonable Rates

Cash or Venmo

Large and Small Breed Dogs

541-233-9106

Tuesday-Thursday



The Flyway Restaurant

541-943-3993

The Lodge at Summer Lake



Visit our beautiful Horsefeathers Gift Shop. Estate & Collectible Goods & Books

Specialties of the House!

Hand-cut Steaks! Grilled Salmon & Fabulous Prawn Dinners

Please Call for Reservations and to Verify Hours

Reservations required for groups of six or more

Featuring Local Beef

"1875 RANCH"

Hand-Pressed Burgers

House-made Soups

Daily Specials

Homemade Fresh Pies & Custom Desserts

We have beverages to go including Beer and Wine

Premium Hand-Cut Steaks

Seafood

BBQ

We've a nice selection of Oregon Beers and Wines

HOURS

Mon-Thurs: 5-7 pm

Fri & Sat: 8am to 2 pm and 5pm to 7pm

Sundays: 8 am to Close

503 679 7472 **DAN'S TRACTOR SERVICE**



**Sometimes You Need
More than a
Shovel, Rake or Hoe**

**IMPLEMENTS FOR
EVERY JOB!**

- Box Blade**
- Angle Blade**
- Landscape Rake**
- Fork Lift**
- Attachment**
- Front End**
- Loader**
- Post Hole Auger**
- Rototiller**

Summer has arrived! Time to Book your landscaping and tractor projects with Dan.

Weather you are building fences or replacing posts, getting a yard area ready to plant, leveling a new driveway or roto-tilling a large garden bed, Dan is your man.

Reasonable rates combined with experience mean you will get the most bang for your buck. And, most small property owners don't need a giant piece of machinery to get their project or projects done.

Remember, as the weather warms more and more folks are needing help with their projects, so get your reservations in now as a way to ensure you will be able to get the work done when it needs to be done.



Dan is leveling a large area behind our barn and paddocks for our new dressage court. With a two-foot elevation change it is a major project.

HIGH DESERT COMMUNITY RADIO

LISTENER SUPPORTED

VOLUNTEER POWERED

INFO@ KPOV. ORG

WWW. KPOV. ORG

Schedule information & More

A circular logo for KPOV 88.9 FM. It features a stylized 'A' shape inside a circle, with the text 'KPOV' and '88.9 FM' below it.

**Our new Tower on Pine Mountain
Brings us to your doorsteps**

*If you can't get us on your radio
tune in on your computer!*

501 NW Bond St. ~ Bend, OR 97701

Want To Advertise in the Breeze?

**Our Ads
are
All Full Color**

A colorful logo consisting of a stylized flower or sunburst shape made of many small, overlapping petals in various colors like red, orange, yellow, green, blue, and purple.

**The Community Breeze Reaches More Than
1200 North Lake County Households Each Month**

Give us a call at 541-480-0753 Or, email us at terryonitsway@aol.com

Our Homestead In the Canyon

Now Succor Creek State Park in Malheur County Oregon

OUR HOMESTEAD 1918 continues

Authored by Ida Dutcher

Our house was progressing slowly but surely. It was only fourteen by twenty feet, but it looked like a mansion to us. Almost all of the lumber, shingles and shingle stain for the green roof and cement, doors and windows were brought in by pack horses. We usually left the wagon down at the lower end of the canyon now. The road was very steep and rocky up over the top from there, so we never used it except when absolutely necessary.

Willard was rolling rocks down the hill to be used in the house when a large one rolled on his foot, crushing the bone in his foot and ankle. I helped him to the tent and he asked me to get him a hammer, nails and an apple box. With these he built a cast to fit his foot and extend up his leg. I tore cotton out of a quilt and tore strips from a sheet. He put his foot in this box and packed the padding around it. He wore this for six weeks and when he took it off, his foot and ankle seemed to be as good as any good doctor could have done.

We had our brand recorded as the reversed Fifty Seven, While the Ƨ brand or our ranch, did not become well known as some of the ranches there, it has a name now to be proud of, Succor Creek State Park. My family and I are proud to think that at one time we were a part of it, although Orville and I are the only ones of the four original family left to enjoy it and have all the memories of the past.

We eventually got the house so that we could move in, although all the shingles were not all on one side where the table was sitting. We were sitting down to supper when a shower came up suddenly and we had to move the table before we could finish our meal.

We had water ditched around the hillside from Trimney Creek which filled a barrel near the back door for house water, and soon had a green lawn growing.

We mad a dug-out in back of the house for a cellar and from then on kept it filled with canned fruit and vegetables.

My first experience with canning wasn't very successful. We loved raspberries, so Willard went to town and brought some Economy fruit jars and two crates of berries. I read the directions on how to cold pack them in the jars, which I did by covering them with syrup and putting the lids and clamps on. Willard carried them to the cellar and we were so proud of them, but a few days later I noticed they had spoiled and the juice had run all over the shelves. I felt to bad and just couldn't understand what had gone wrong until I got the directions and read them again. I read farther down this time and saw where I should have put them on and brought them to a boil first before storing them. So, I learned another lesson the hard way.

PRIDE

Pride was a beautiful bay horse that Don Ross first corralled at our place in the canyon. He was a wild one and it took Don quite some time to tame him down and get a saddle on his back. Don was a good buckaroo and had a lot of patience with a horse. He was to break him for a saddle horse for a Mr. Driscoll who owned a place on upper Succor Creek. But after a time, Don decided he had him broken to ride as well as he could and he took him to the ranch and turned him over



to the owner; but Mr. Driscoll said he was too much horse for him so he sold him and the next I heard of Pride he was top bucking horse at the Pendleton Round Up and he became a famous bucking horse along with Midnight and Five Minutes Till Midnight. This was in the twenties. Wish I could write more about these

famous horses.

SPANISH CHARLIE

The ranch adjoining the rocky ford ranch to the east was known as the Spanish Charlie place and people were still talking about what happened there when we moved there. Here is the story as it was told at that time.

Charlie had a rock fence built on the north side of his place (after all these years the fence is still there). Jake Mussell had sheep and let them through the fence in Charlie's pasture. A quarrel started and Charlie went to the dug-out house where he lived for his gun, but never made it as Jake shot him through the back as he went through the door. The bullet hole is still in the door.

Charlie's grave is on the brink of the hill, back of his house overlooking Rocky Ford.

Mussell came clear at the trial as the jury decided it was self defense.

ANOTHER MOVE

The second winter after we moved into our house we moved down the creek bout six miles to the Giese place for the winter. Willard had bought some hay down in the valley near Homedale and this would be a good place to feed it out. There was a barn, corrals and a small cabin to live in which was furnished. So, all we would have to move was our clothes and bedding. It had been a dry hot sumer so he felt it would be better to feed some of the stock.

with the long winter evenings there was nothing to do so he tried to teach me to play cards. Rummy was the game. H always beat me and got to drawing pictures of a skunk when he won. He had a large score board hung over the table and there were dozens of little skunks before I finally learned enough about the game so that I could beat him. It was fun anyway and I didn't get mad, but it was a happy day when I got so I could beat him occasionally. I must have been a dull partner, but he never said so. I guess he thought the skunks should give me the message.



Ida Dutcher

August, 2024 began the serialization of Ida Dutcher's little book, "Our Homestead In the Canyon: Now Succor Creek State Park" in Malheur County, Oregon.

The book was first printed in 1970 when Mrs. Dutcher was 78 years old and shares her memories of homesteading during the early years of her marriage.

We hope you enjoy the read as much as we did. The book has many photos which we will share but because of their age they will not be crisp.





Speech Therapy



For Seniors, Adults and Children!

- Do you have trouble remembering things?
- Can't put together what or how you want to say things?
- Do you need to continue school speech therapy?
- Are you getting food or drink down the wrong pipe too often?
- Is your voice losing its volume?
- Do people say they cannot understand what you're saying?
- Are you apprehensive to speak in a group or use the phone?
- Are you struggling with stuttering?

Virtual speech therapy services are found to have equal results to in person visits. If you are not tech savvy, don't worry, I can help you connect.

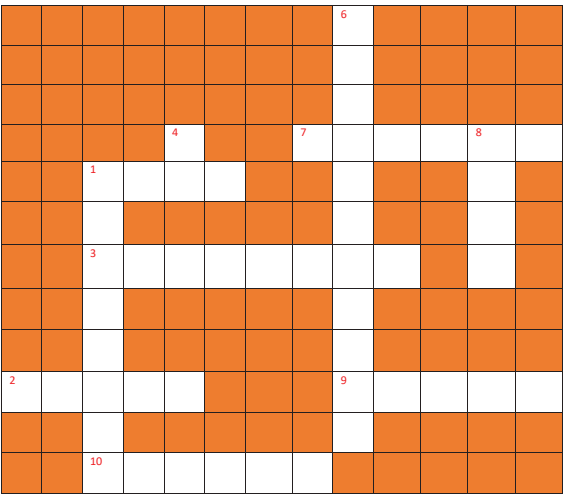
I can address your goals using topics and tasks that are important for you!

Call me, text me or email to inquire. Free consultation!

Tracy Leckenby, M.A.,CCC-SP, Silver Lake, OR

724-331-4534

Helpwspeech@gmail.com



ACROSS

- 1. A green citrus fruit
- 2. A bone in your mouth.
- 3. A job benefit, "2 weeks paid?"

- 7. Frozen drips from the roof
- 9. Childish term for "easy"
- 10. A light primary color

DOWN

- 1. School term for "Bathro"
- 4. Tells us time after noon

- 6. Department which sells T.V.s, computers, phone!
- 8. The opposite of "more"

"Cognition"; What is it? What does it have to do with me?

The term "Cognition" refers to the processes that your brain goes through to sense things in the environment, make sense of them, draw conclusions and make plans. The workings of the brain are not completely identified after hundreds of years of research beginning with the ancient Egyptians. It is truly a miracle. From the ability to pay attention and remember to planning and making decisions, cognition and its variations are vast. Have you ever said, "It's on the tip of my tongue.", "I lost my train of thought.", "What was I doing?"? These are evidence of inefficient cognitive skills, for one reason or another.

Thinking skills change over the course of our lifetime. As we change our routines and activities through our daily work tasks, episodes of illness, retirement, different functions within our cognition, are challenged and others are not. The ones challenged, step up to the task and become more efficient; the ones that are not used get weaker and less efficient. Your brain accommodates the challenges you give to it, just like your skeletal muscles do. This is why a variety of activities and interests are important to our growth. But those opportunities don't always present themselves. And what exercises should you do?

You can keep you brain in shape by taking time to do activities that exercise those skills! Puzzles, strategy games, logic and reasoning puzzles, "Therapy for the Adult Mind", section of this paper can help your brain to exercise skills.

No matter your age, disability, or skill level, your brain needs to be exercised. It is true what they say: "If you don't use it, you lose it." And it happens quicker than you think!

If you would like help with exercising your cognition or communication, please email me at helpwspeech@gmail.com



HOW LOW CAN YOUR PAYMENT GO?

Ready to see how low your payment can go? Give us a call at 541-850-7799



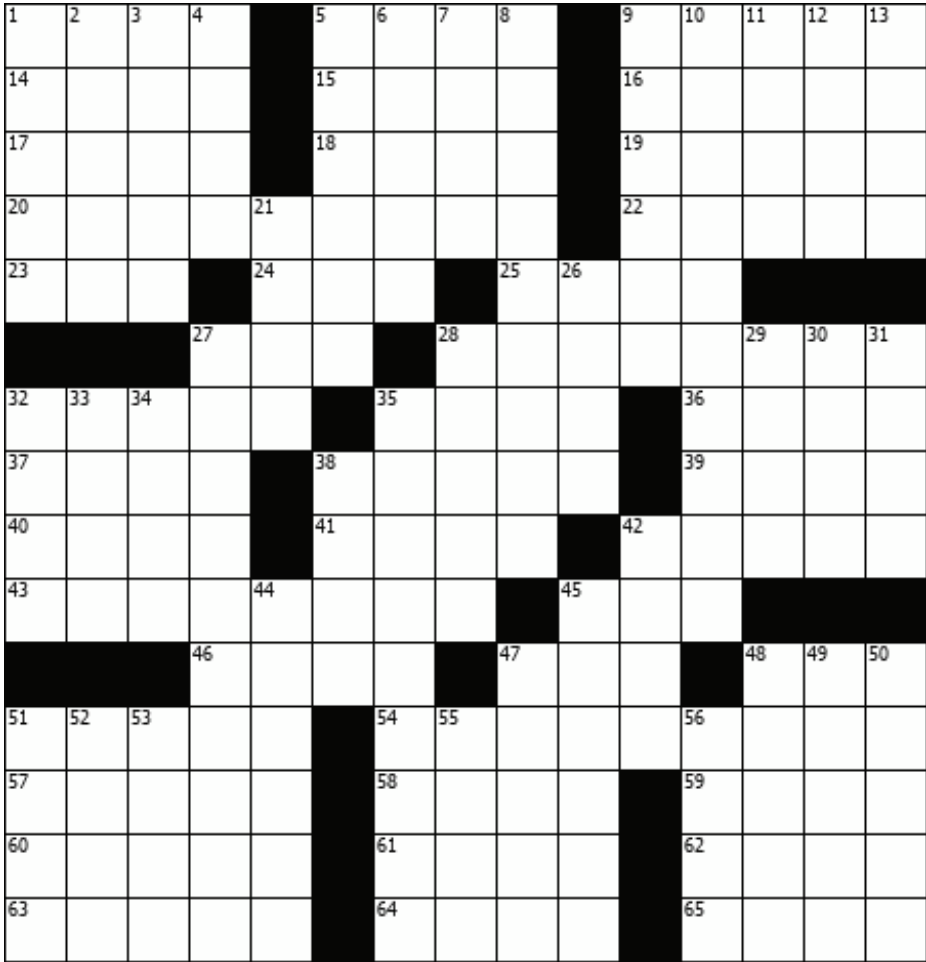
You may be able to save money every month on your Car loans, Credit Cards, and other loans by moving them to Pacific Crest.*

We've recently refinanced hundreds of loans for people looking for lower payments.

* Lowering a payment and actual savings will depend on factors such as rates, balance, terms and new charges or fees. All loans on approved credit. Credit Union membership required and subject to approval.

myPCFCU.org Federally insured by NCUA

JUNE CROSSWORD



Across

1. Word after "he" and "she"
5. Jersey juvenile
9. Golfer's motion
14. Surveyor's layout
15. Something sensed
16. Very small amount
17. Wrinkly, yellowish fruit
18. "Dies ____" (hymn)
19. Draw a bead on
20. Juilliard timing implement
22. Autocrats
23. Prohibition, for one
24. Weightlifting unit
25. ____ Nam
27. Joining word
28. Department store department
32. Tell's target
35. Frau's mate
36. Farm parcel
37. "Come Back, Little Sheba" role
38. Lay off

39. Slenderize

40. Equal person
41. Load as cargo
42. Upbraid
43. Mad rush
45. Homer's word
46. Bivouac
47. Word with "vivant" or "voyage"
48. Fancy neckwear
51. Antechambers
54. Thing featuring the sands of time
57. "The Sacred Wood" author
58. Singles
59. Pronto
60. Tourist attraction
61. Columbus caravel
62. Diving position
63. Cops a look
64. Latin catchall
65. Schematic

Down

1. Sea froth
2. Author Horatio

3. Conference site of 1945
4. Cookbook word
5. Initiated
6. It's "in the bucket"
7. Rich soil
8. Unrhymed poesy
9. Solid and gas
10. Where to find time on one's hand?
11. "____ Camera"
12. It's south of Va.
13. Obtains
21. Its capital is Alencon
26. Dictator's words
27. Dream interruption
28. Gettysburg winner
29. Reverberation
30. Seed jacket

31. Rive
32. St. Bernards' beat
33. Author of 8-Down
34. Response to a charge
35. Walkman accessory
38. Skelton's Kadiddlehopper
42. Berlin product
44. Spaghetti and macaroni
45. Kind of fin
47. ____ Vista
48. ____ Rathbone
49. City on Honshu, in Japan
50. Trembling tree
51. Multipurpose plant
52. Toward shelter
53. Some parasites
55. "Don't bet ____!"
56. Finnish nomad

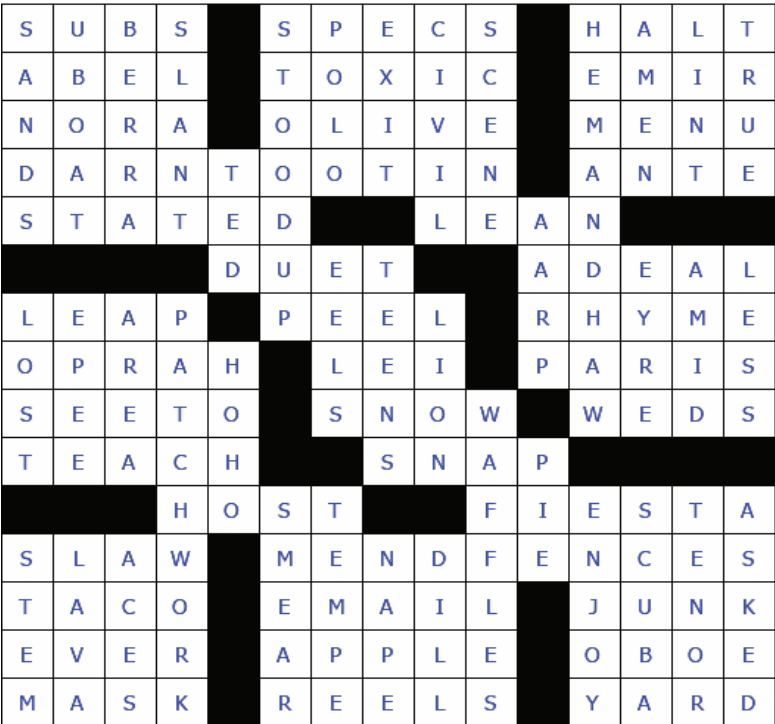
Public Meetings

PLEASE BE ADVISED

Some of our Special Districts have a Public Comment policy that requires interested or concerned parties to submit their comments, concerns and questions in writing, so please check.

- CV Boosters - 2nd Mon at 7pm at Booster Building
CV/NL Chamber of Commerce - quarterly (watch for posters)
CV Fire Board - 2rd Tuesday at 6pm at The CVFire Hall
NL Park & Rec - 2nd Tues at 9am at The Community Hall
CV Water Board - 2nd Wed at 6 pm at District office
NLEMS - 1st Tuesday of the month at 7pm
FT Rock Grange - 2nd Wed at 6:30pm at Grange
Ft Rock Historical Society - 2nd Tues-10am at the Museum
NL Health District - 1st Mon at 5:30 pm at the Clinic
North lake School dist: - 2nd Monday at School Library

MAY SOUTHERN



NAPA AUTO PARTS

SUMMER SAVINGS

May 1-June 30
2025

SAVE UP TO 22%

STARTING AT \$10.99 /each
Blaster® A/C Products
Productos de Aire Acondicionado

BLASTER

Part Number	Description	Size	Price
NCB BLA190	R-134a Stop Leak Auto A/C Refrigerant	3 oz.	\$10.99
NCB BLA405	R-134a Re-Charge Hose For Self-Sealing Cans		\$17.29
NCB BLA310	R-134a Stop Leak Auto A/C Refrigerant	12 oz.	\$31.99
NCB BLA348A	R-134a A/C Refrigerant	16 oz.	\$35.99
NCB BLA232D	Trigger A/C R-134a Refrigerant	18 oz.	\$35.99
NCB BLA602YFD	R-1234YF Recharge Kit w/Digital Gauge	10 oz.	\$67.99

Milwaukee

\$29.99

Milwaukee®
350 Lumen LED Headlamp
Linterna Frontal LED
Milwaukee® de 350 lúmenes
MIL 2103

\$243.99

NAPA
12/24V
Manual Wheel
Battery Charger
Cargador Manual de Baterías
con Ruedas NAPA 12/24V

STARTING AT \$2.79 /each
Tool Box® Blue Shop
Towels
Toallas de Taller Azules Tool Box®

SAVE UP TO 24%

LINE	PART	DESCRIPTION	PRICE
NCB	5440030	Blue Shop Towels - 55 sheets	\$2.79
NCB	54416	Blue Shop Towels - 6 Pack Of 55 Towel Rolls	\$14.99

STARTING AT \$19.29 /each
Crocodile Cloth
Paños Crocodile

SAVE 20%

LINE	PART	DESCRIPTION	PRICE
NCB	5440030	Blue Shop Towels - 55 sheets	\$2.79
NCB	54416	Blue Shop Towels - 6 Pack Of 55 Towel Rolls	\$14.99

STARTING AT \$14.99 /each
Midwest Can Gasoline Cans
Bidones para Gasolina Midwest Can

SAVE UP TO 29%

LINE	PART	DESCRIPTION	SIZE	PRICE
BK	1210	Red Plastic CARB and EPA Compliant Gasoline Can w/Quick-Flow Spout™	1 gal.	\$14.99
BK	2310	Red Plastic CARB and EPA Compliant Gasoline Can w/Quick-Flow Spout™	2 gal.	\$18.99
BK	5010	Racing Gasoline Fuel Can with Speed-Flow Spout	5 gal.	\$39.99

STARTING AT \$5.99 /each
Tub o' Towels® Heavy Duty
Cleaning Wipes
Toallitas de Limpieza de Gran Resistencia Tub o' Towels®

SAVE UP TO 25%

LINE	PART	DESCRIPTION	PRICE
NCB	5440030	Blue Shop Towels - 55 sheets	\$2.79
NCB	54416	Blue Shop Towels - 6 Pack Of 55 Towel Rolls	\$14.99

STARTING AT
\$8.49 /each

SAVE UP TO 41%

Sea Foam® Products
Productos Sea Foam®



LINE	PART	DESCRIPTION	PRICE
SF	DC14	Deep Creep Multi-Use Penetrating Lubricant - 12 oz.	\$8.49
SF	SF16	Motor Treatment - 16 oz.	\$8.49
SF	HM16	High Mileage Motor Treatment - 16 oz.	\$9.49
SF	MP20	Marine Pro - 20 oz.	\$10.99

STARTING AT
\$19.29 /gal

Shell Rotella®
Shell Rotella®



LINE	PART	DESCRIPTION	PRICE
SHE	550045144	T4 Triple Protection 10W30 Motor Oil - 1 gal.	\$19.29
SHE	550045126	T4 Triple Protection 15W40 Motor Oil - 1 gal.	\$19.29
SHE	550045130	T5 Synthetic Blend 10W30 Motor Oil - 1 gal.	\$21.99
SHE	550045348	T5 Synthetic Blend 15W40 Motor Oil - 1 gal.	\$21.99
SHE	550046254	T5 Ultra Motor Oil 10W30 Semi-Synthetic - 1 gal.	\$26.99
SHE	550069698	T6 Full Synthetic 10W30 Motor Oil - 1 gal.	\$26.99
SHE	550045347	T6 Full Synthetic 5W40 Motor Oil - 1 gal.	\$26.99
SHE	550050467	T6 Multi-Vehicle 15W40 Motor Oil - 1 gal.	\$26.99
SHE	550046251	T6 Multi-Vehicle 5W30 Motor Oil - 1 gal.	\$26.99

**Christmas Valley
Auto Supply**

Monday-Friday 8am-5pm ~ Sat. 9am-1pm
8700 Christmas Valley Highway 541 508 4646

NAPA AUTO PARTS



**LA Pine
Auto Supply**

Monday-Friday 7am-7pm ~ Sat. 8am-5pm ~ Sun. 9am-3pm
HWY. 97 Downtown La Pine 541 536 2192

YOUR LOCAL SOURCE FOR AUTO PARTS - LOCALLY OWNED

**You work hard.
We'll work hard
for you!**



**NO STRESS WITH
point S**

**Get to the Point for all of your tire and auto
needs, North Lake Point S has your back.**

Truck, Car, and Farm Tires • Auto Services

LOCALLY OWNED, NATIONALLY CONNECTED, AND STRESS FREE.

point S NORTH
LAKE
TIRE & AUTO SERVICE

541-576-2032
87180 Christmas Valley Hwy

PointSTire.com/NorthLake • Christmas Valley